



## DAMM® MultiTech Outdoor Base Station BS422

The world's only outdoor base station featuring multiple technologies in one single core-connected system: TETRA, DMR Tier III, TEDS and Analog. Cover your needs today and tomorrow with a technology-independent solution featuring Multi-Technology, Multi-Frequency, Multi-Carrier and Simulcast in one box.



**Simply choose the technology to match your current need – and scale anytime to meet changing voice and data needs with a simple click. Or combine multiple technologies in one coherent system without using any gateways or bridges.**

### Multi-Technology

- the world's first outdoor base station featuring four technologies in one box:

- TETRA
- DMR Tier III
- TEDS
- Analog

### Multi-Frequency

- extends coverage by supporting VHF and UHF mode in all technologies

### Multi-Carrier

- provides a flexible, cost-efficient solution by enabling up to four carriers in one box and even combining multiple technologies in one box

### Simulcast

- available for DMR and Analog and now also offers repeater functionality for TETRA and TEDS

### Core connected!

Did you know it is even possible to use the BS422 in hybrid mode? For instance, you can run one carrier in TETRA, the second in DMR and the third in TEDS, thereby allowing cross-technology communication. Or simply activate all four technologies on one carrier using the new Multi-Carrier feature.

It is also possible to use different technologies at different sites and combine them into one network with one central subscriber register, manageable in a single network management tool.

With everything covered by one system, operation, maintenance and repairs are simply easy. Applications like dispatchers only need to be integrated once and can be used across technologies. For incident tracing or system surveillance one single voice and data log system can be used across all technologies. You only need to stock spare parts for one product no matter which technology you are using.

### Critical Communication made easy

DAMM offers the most flexible, scalable and intelligent critical radio and broadband communication solution available.

We make it easy for you to reduce your TCO, stay agile and move your business forward.

### DAMM Cellular Systems A/S

Møllegade 68  
6400 Sønderborg  
Denmark  
Phone: +45 7442 3500  
Email: sales@damm.dk

[www.damm.dk](http://www.damm.dk)

*Applications and Gateways  
DAMM and third-party applications will run using the same user-friendly interface no matter what technology you choose. You can use TETRA, DMR or Analog over LTE or WiFi with the DAMM TetraFlex PTT app.*



# DAMM's MultiTech solution offers:

## MultiTech System:

- Core-connected system without any bridges or internal gateways
- Full integration into subscriber register, network management and alarm surveillance
- Full integration into voice and data logging and dispatching applications across all technologies
- Easy coverage extension for TETRA, DMR and Analog over LTE or WiFi
- Fully integrable with DAMM legacy products BS418 and SB/BS421
- Simulcast and non-simulcast networks can operate in one single larger network

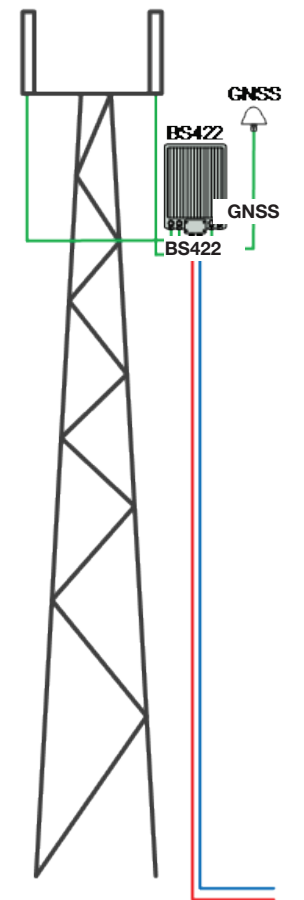
## MultiTech Platform:

- Will consist of outdoor, indoor products as well as FMT and RDT solutions
- Software-defined radio allowing cross-technology (DMR Tier III, TETRA, TEDS and Analog) and hybrid usage
- Multi-Carrier: Allows up to four logical carriers to run inside one box
- Simulcast: Allows repeater functionality for any technology mode to increase coverage when frequencies are scarce

## MultiTech Product: BS422

- Compact, low-weight and rugged outdoor base station
- Powerful integrated controller and optional SSD drive
- Improved redundancy
- Input power: PoE or external powering
- Output power: Standard and high-power options
- Internal or external GNSS receiver available
- Two-way receive diversity for all technology modes
- Synchronization: 1PPS, IEEE1588 via LAN, GNSS (GPS, Galileo, Glonass)
- Frequency ranges:

	RX Band	TX Band
VHF	68-87.5MHz	68-87.5MHz
	146-174MHz	146-174MHz
UHF	350-360MHz	360-370MHz
	380-390MHz	390-400MHz
	410-420MHz	420-430MHz
	450-460MHz	460-470MHz
	805-825MHz	850-870MHz



— Ethernet LAN/WAN  
— Coaxial  
— Power supply -48Vdc

Ethernet LAN/WAN  
 Coaxial  
 Power Supply -48Vdc

**DAMM Multi-Tech Platform  
featuring the BS422  
Outdoor Base Station**

## TETRA mode:

- TETRA repeater-mode-option
- High-power option
- Market-leading power efficiency

## DMR Tier III mode:

- DMR Tier III outdoor base station with integrated duplexer and diversity receiver
- Supports wide range of DMR terminals
- Simulcast option

## TEDS mode:

- Most compact TEDS outdoor base station
- Data rate: between 11 and 538kbit/s
- Real mission-critical data communication
- Same spectral efficiency as LTE, but with far less frequency scarcity

## Analog mode:

- Easy migration from Analog to TETRA or even TEDS
- Simulcast option
- Supports conventional FM radio

Specifications subject to change without notice

DAMM and TetraFlex are registered trademarks of DAMM Cellular Systems A/S

